




# Climatic Bulletin

March 2022

 **Max  
temperature**

 **Min  
temperature**

 **Mean  
temperature**

 **Precipitation**

 **Sunshine  
duration**

March was a cold month for every part of Greece. Significant snowfalls recorded mainly over north and east areas (mostly over the mountainous ones) in the middle of the period. Also gale force north winds affected the whole country for a long time.



# Temperature

### First 10-day period

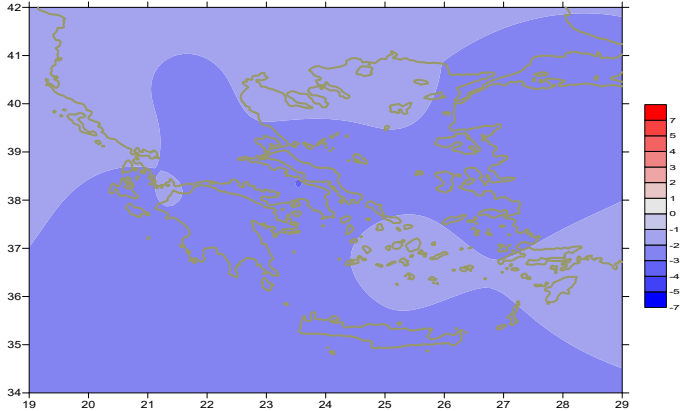
More specific (varied) :

**Minimum:**

from  $-7^{\circ}\text{C}$  to  $7^{\circ}\text{C}$  over north mainland,  
 from  $-7^{\circ}\text{C}$  to  $11^{\circ}\text{C}$  over central mainland,  
 from  $-1^{\circ}\text{C}$  to  $14^{\circ}\text{C}$  over rest parts.

**Maximum:**

from  $1^{\circ}\text{C}$  to  $12^{\circ}\text{C}$  over north mainland,  
 from  $2^{\circ}\text{C}$  to  $18^{\circ}\text{C}$  over central mainland,  
 from  $7^{\circ}\text{C}$  to  $19^{\circ}\text{C}$  over rest parts.



*Deviation of mean temperature from normal values*

### Second 10-day period

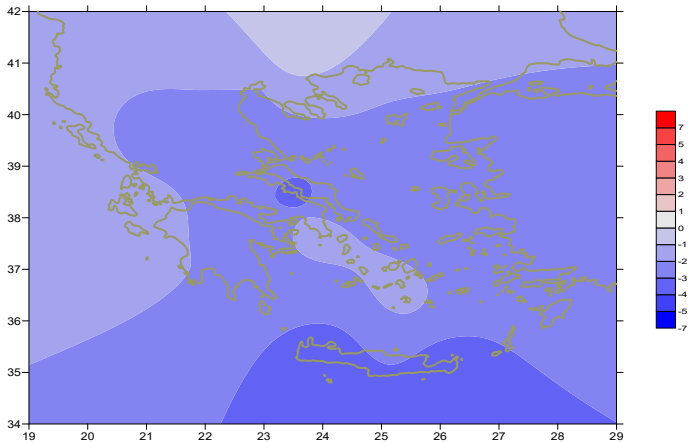
More specific (varied) :

**Minimum:**

from  $-10^{\circ}\text{C}$  to  $4^{\circ}\text{C}$  over north mainland,  
 from  $-9^{\circ}\text{C}$  to  $10^{\circ}\text{C}$  over central mainland,  
 from  $0^{\circ}\text{C}$  to  $12^{\circ}\text{C}$  over rest parts.

**Maximum:**

from  $0^{\circ}\text{C}$  to  $15^{\circ}\text{C}$  over north mainland,  
 from  $3^{\circ}\text{C}$  to  $19^{\circ}\text{C}$  over central mainland,  
 from  $4^{\circ}\text{C}$  to  $17^{\circ}\text{C}$  over rest parts.



*Deviation of maximum temperature from normal values*

### Third 10-day period

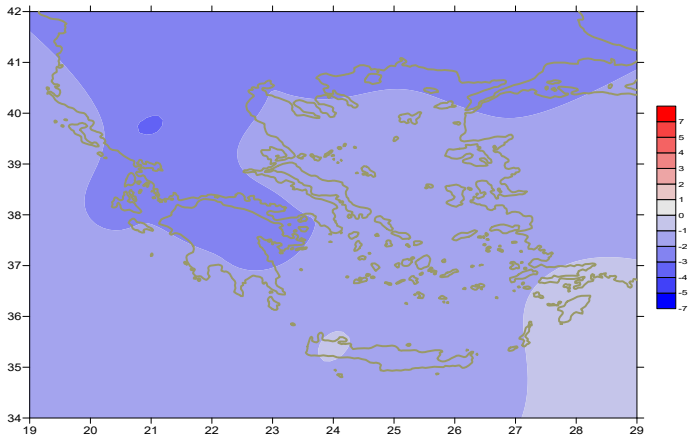
More specific (varied) :

**Minimum:**

from  $-7^{\circ}\text{C}$  to  $11^{\circ}\text{C}$  over north mainland,  
 from  $-5^{\circ}\text{C}$  to  $15^{\circ}\text{C}$  over central mainland,  
 from  $2^{\circ}\text{C}$  to  $14^{\circ}\text{C}$  over rest parts.

**Maximum:**

from  $7^{\circ}\text{C}$  to  $23^{\circ}\text{C}$  over north mainland,  
 from  $6^{\circ}\text{C}$  to  $25^{\circ}\text{C}$  over central mainland,  
 from  $9^{\circ}\text{C}$  to  $22^{\circ}\text{C}$  over rest parts.



*Deviation of minimum temperature from normal values*



## P r e c i p i t a t i o n

### First 10-day period

Locally large amounts of precipitation.

More specific:

24mm in Aghialos (1/3),  
 17mm in Sofades, 36mm in Heraklion, 34mm in Sitia,  
 92mm in Souda, 56mm in Kasteli, 19mm in Gavdos, 18mm in Kos,  
 16mm in Kastelorizo, 28mm in Karpathos, 32mm in Rodos (2/3),  
 40mm in Argostoli, 35mm in Zakynthos, 30mm in Adravida,  
 17mm in Limnos, 18mm in Sofades (5/3),  
 20mm in Edessa, 26mm in Preveza, 20mm in Ioannina, 21mm in Kerkira,  
 26mm in Kalamata, 21mm in Larisa, 47mm in Chios, 42mm in Ikaria,  
 22mm in Mithilini (6/3), 20mm in Thessaloniki (8/3),  
 25mm in Zakynthos, 23mm in Oreoi (9/3),  
 22mm in Tanagra, 25mm in Heraklion, 18mm in Sitia, 30mm in Souda(10/3).

### Second 10-day period

Locally significant amounts of precipitation.

More specific:

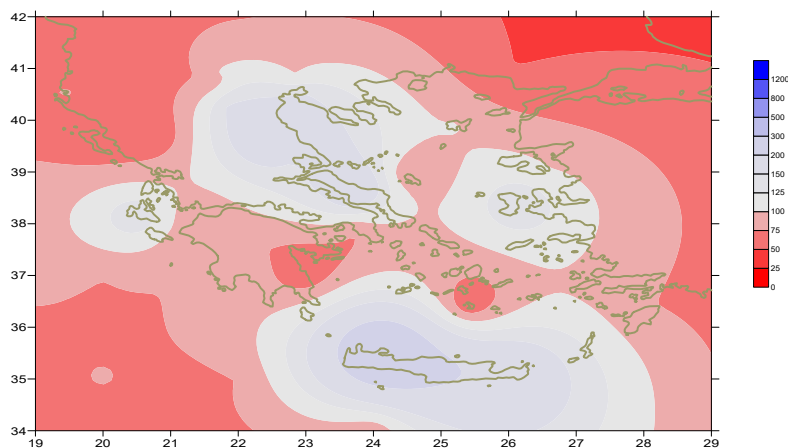
23mm in Kasteli (11/3), 12mm in Tanagra (12/3),  
 29mm in Oreoi (13/3), 16mm in Edessa (18/3).

### Third 10-day period

Locally significant amounts of precipitation.

More specific:

22mm in Heraklion, 22mm in Souda, 25mm in Kasos,  
 8mm in Tatoi, 8mm in Elefsina (23/3).



**Deviation of monthly precipitation height  
from normal values (%)**

TABLE OF MEAN VALUES

STATION	Longitude	Latitude	Tmean	TX	TN	RR	INST
SERRES	23,53	41,07	8,3	14,3	1,5	29	191
FLORINA	21,40	40,78					
KASTORIA	21,27	40,45	4,5	10	-1,8	39	180
TRIKALA_IMATHIAS	22,55	40,60					
THESSALONIKI	22,97	40,52	8,1	12,2	2,4	54	191
CHRYSOUPOLI	24,62	40,92	7,2	11,2	2	20	195
ALEXANDROUPOLI	25,95	40,85	6,5	10,6	1,3	16	213
KOZANI	21,83	40,28	4,5	9,4	-1	53	
KERKYRA	19,92	39,62	10,7	14,7	5,4	42	198
IOANNINA	20,82	39,70	7,1	12,4	0,2	11	197
PREVEZA	20,76	38,91	10,9	14,6	6,4	70	
TRIKALA_THESSALIAS	21,77	39,52					
LARISA	22,45	39,65	7,4	12,5	1,3	57	157
LIMNOS	25,23	39,92	8,1	10,6	4,6	44	184
ARTA	21,00	39,17					
AGHIALOS	22,78	39,21	7,9	12,3	3,2	69	160
MYTILINI	26,60	39,05	9,3	12	6,4	62	188
VELO	22,77	37,97					
AGRINIO	21,35	38,60					
LAMIA	22,43	38,87					
ANDRAVIDA	21,28	37,92	9,9	14,4	4,8	60	233
SKYROS	24,48	38,96	9,4	11,6	7,2	28	120
ARGOSTOLI	20,50	38,12	10,8	14,4	7,3	99	192
ARAXOS	21,42	38,15	10,4	14,3	5,3	41	223
TANAGRA	23,57	38,33	7,2	11,4	2,8	72	140
HIOS	26,13	38,35	9,6	12	6,3	102	190
PYRGOS	21,42	37,67					
TRIPOLI	22,40	37,52	5,3	10,4	-0,3	38	181
TATOI	23,78	38,10	7,6	11,5	3,4	33	
HELLINIKO	23,73	37,90	10,1	14,2	6,6	18	197
ELEYSINA	23,55	38,07	9,6	13,1	5,5	31	
ZAKYNTHOS	20,88	37,75	10,8	14,7	7,3	82	204
SAMOS	26,92	37,68	9,8	12,7	6,4		
ARGOS	22,75	37,63					
KALAMATA	22,02	37,07	10,4	15,2	5,1	56	203
NAXOS	25,37	37,10					
METHONI	21,70	36,82					
MHLOS	24,43	36,73					
SPATA	23,95	37,95	8,9	12,4	4,9	32	
KOS	27,08	36,80	11,3	14,3	9	44	
KYTHIRA	22,98	36,15					
SANTORINI	25,41	36,41	11,3	13,4	8,8	30	187
SOUDA	24,12	35,55	10,1	13,1	7,7	206	147
RODOS	28,08	36,40	12	14,6	9,3	54	217
MYKONOS	25,35	37,43	10,6	12,7	8,9	17	
HRAKLEIO	25,18	35,33	11,4	14	8,2	116	163
IERAPETRA	25,73	35,02					
SITEIA	26,10	35,21	11,2	13,5	9	91	128
RETHYMNO	24,50	35,36					
TYMPAKI	24,76	35,06					
KASTELI	25,33	35,18	8,4	11,8	4,8	170	125
KARPATIOS	27,15	35,42	12,3	14,5	10,6	38	
PAROS	25,13	37,02	10,6	13,2	8	31	195
SYROS	24,95	37,42	10,7	12,6	8,2	44	184
IKARIA	26,35	37,68					

11,314,58,13617810,214,16,45611,314,57,89612510,713,7820210,5165,88616112,715,410,232137

**TABLE OF DEVIATIONS  
FROM NORMAL VALUES**

<b>STATION</b>	<b>TMEAN ( deviation ) (I)</b>	<b>PRECI ( deviation % ) (II)</b>
SERRES	-1,4	88
FLORINA		
THESSALONIKI	-1,5	118
ALEXANDROUPOLI	-2	31
KOZANI	-2,5	126
KERKYRA	-1,4	43
IOANNINA	-1,8	11
LARISA	-2,1	157
LIMNOS	-1,8	85
AGHIALOS	-2,1	132
MYTILINI	-2,5	83
AGRINIO		
SKYROS	-2,3	55
ARGOSTOLI	-2,3	119
ARAXOS	-1,9	69
HIOS	-2,2	139
HELLINIKO	-2,3	41
ZAKYNTHOS	-2,1	92
SAMOS	-2,4	-
KALAMATA	-2	78
NAXOS		
METHONI		
SANTORINI	-1,4	50
SOUDA	-2,5	255
RODOS	-1,6	72
HERAKLIO	-2,2	202
SITIA	-2,6	162

(I) deviation of mean temperature from normal values  
 (II) deviation of monthly precipitation height from normal values %.

# Climatic Bulletin

## General Description

Precipitation amounts were higher enough than normal values over east and south parts (mainly over the islands of Evia and Crete). The mean temperature varied lower enough than normal values.

### Climatic Parameters :

- ❖ **Normal Values** : normal values for various parameters (temperature, precipitation, etc) are defined as mean values calculated for 30 years. These normal values are used as basis and represent the mean situation. They can be specified in 10 daily, monthly, seasonally and yearly level and are used for the trend comparison of 10 days, month, season or year as: rainy decameron, mild winter, cool August etc.

### Measurement :

- ❖ **Precipitation**  
1 mm = 1 litre/m<sup>2</sup>

### Table Legend :

T<sub>mean</sub> : Mean Temperature  
 TN : Minimum Temperature  
 TX : Maximum Temperature  
 RR : Precipitation height(mm)  
 INST : Sun Duration (hours)

### UTC hours (Universal Time Coordinates) in Greece :

- ❖ Winter : UTC hour = local hour - 2
- ❖ Summer : UTC hour = local hour - 3

© Hellenic National Meteorological Service  
 Reproduction is prohibited without written authorization  
 14 El.Venizelou 16777  
 Helliniko, Athens  
 Greece