




Climatic Bulletin

December 2020

 **Max
temperature**

 **Min
temperature**

 **Mean
temperature**

 **Precipitation**

 **Sunshine
duration**

In December very high amounts of precipitation recorded but only a small part of that was snow over the mountainous areas.

Also near gale to gale force south winds prevailed for a long time while significant amounts of dust transported from Africa during two episodes.



ΕΘΝΙΚΗ
ΜΕΤΕΩΡΟΛΟΓΙΚΗ
ΥΠΗΡΕΣΙΑ
HELLENIC NATIONAL METEOROLOGICAL SERVICE



Temperature

First 10-day period

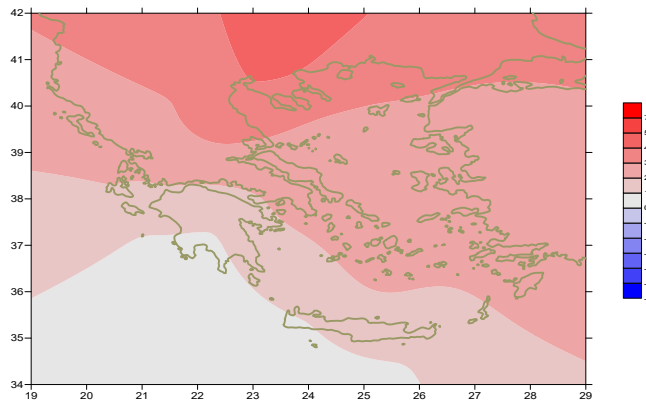
More specific (varied) :

Minimum:

from -8°C to 13°C over north mainland,
 from -1°C to 15°C over central mainland,
 from 4°C to 17°C over rest parts.

Maximum:

from 4°C to 17°C over north mainland,
 from 6°C to 20°C over central mainland,
 from 10°C to 21°C over rest parts.



Deviation of mean temperature from normal values

Second 10-day period

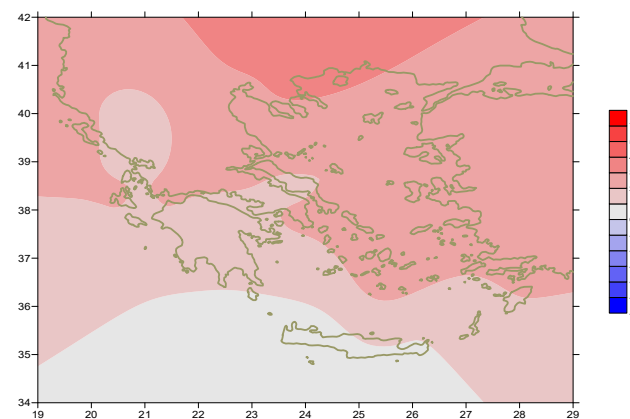
More specific (varied) :

Minimum:

from -4°C to 10°C over north mainland,
 from 2°C to 13°C over central mainland,
 from 4°C to 16°C over rest parts.

Maximum:

from 3°C to 16°C over north mainland,
 from 8°C to 17°C over central mainland,
 from 12°C to 19°C over rest parts.



Deviation of maximum temperature from normal values

Third 10-day period

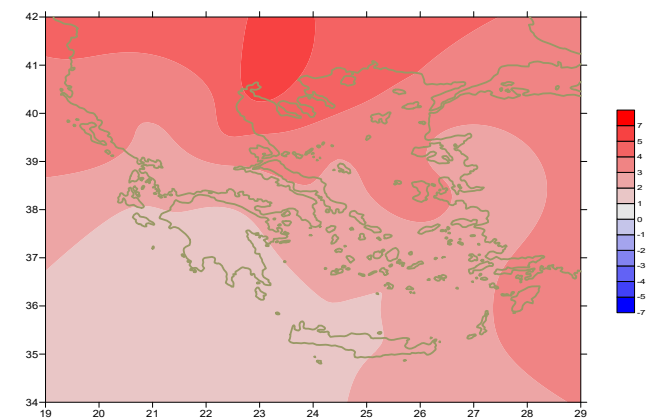
More specific (varied) :

Minimum:

from -2°C to 15°C over north mainland,
 from 0°C to 15°C over central mainland,
 from 5°C to 16°C over rest parts.

Maximum:

from 8°C to 20°C over north mainland,
 from 11°C to 22°C over central mainland,
 from 12°C to 21°C over rest parts.



Deviation of minimum temperature from normal values



Precipitation

First 10-day period

Very high amounts of precipitation.

More specific:

42mm in Argostoli (2/12),
 58mm in Othonoi, 115mm in Argostoli, 18mm in Gavdos (3/12),
 21mm in Edessa, 21mm in Ioannina, 43mm in Kerkira, 80mm in Astros,
 30mm in Chios, 39mm in Ikaria, 70mm in Rodos, 32mm in Hellinikon (4/12),
 46mm in Othonoi, 35mm in Thessaloniki, 38mm in Kranea,
 42mm in Argos, 39mm in Astipalea, 25mm in Kos (7/12),
 36mm in Preveza, 49mm in Ioannina, 50mm in Konitsa, 48mm in Argostoli,
 55mm in Kerkira (9/12),
 43mm in Araxos, 33mm in Zakynthos, 61mm in Adravidia, 34mm in Kalamata,
 29mm in Tripoli, 43mm in Spata, 30mm in Elefsina (10/12).

Second 10-day period

Very high amounts of precipitation.

More specific:

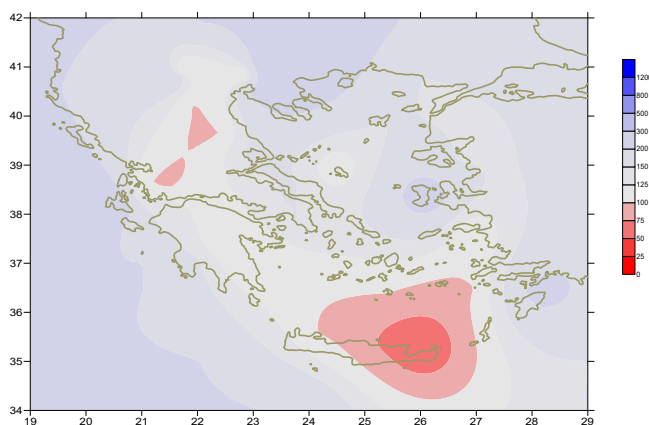
78mm in Kerkira, 35mm in Kalamata, 32mm in Samos (11/12),
 64mm in Xanthi, 31mm in Kavala, 35mm in Mitilini (12/12),
 54mm in Zakynthos, 37mm in Astros, 26mm in Gavdos, 23mm in Limnos (13/12),
 27mm in Soufli, 33mm in Karistos, 35mm in Tanagra, 116mm in Chios,
 62mm in Ikaria, 48mm in Spata, 53mm in Tatoi,
 119mm in Kotroni, 49mm in OAKA (14/12).

Third 10-day period

Locally remarkable amounts of precipitation.

More specific:

33mm in Ioannina, 52mm in Kerkira, 37mm in Othonoi,
 21mm in Mesologi (27/12),
 27mm in Alexandroupoli, 22mm in Kalimnos (28/12),
 25mm in Konitsa (31/12).



**Deviation of monthly precipitation height
 from normal values (%)**

TABLE OF MEAN VALUES

STATION	Longitude	Latitude	Tmean	TX	TN	RR	INST
RRES	23,53	41,07	9,2	12,9	6,1	109	55
FLORINA	21,40	40,78					
KASTORIA	21,27	40,45	6,6	10,2	3,4	74	52
TRIKALA_IMATHIAS	22,55	40,60					
THESSALONIKI	22,97	40,52	10,7	13,6	8,1	112	70
CHRYSOUPOLI	24,62	40,92	10,4	13,4	7,4	129	89
ALEXANDROUPOLI	25,95	40,85	10,5	13,6	7,3	131	100
KOZANI	21,83	40,28	6,7	10,4	3,6	55	
KERKYRA	19,92	39,62	13,6	17,7	10,5	353	92
IOANNINA	20,82	39,70	8,5	12,6	4,5	199	74
PREVEZA	20,76	38,91	13,1	17,2	10	207	
TRIKALA_THESSALIAS	21,77	39,52					
LARISA	22,45	39,65	9,9	13,9	6,1	51	
LIMNOS	25,23	39,92	12,2	15,1	9,8	89	141
ARTA	21,00	39,17					
AGHIALOS	22,78	39,21	11	15,1	7,7	73	88
MYTILINI	26,60	39,05	13,4	15,9	11,2	188	100
VELO	22,77	37,97					
AGRINIO	21,35	38,60					
LAMIA	22,43	38,87					
ANDRAVIDA	21,28	37,92	13,2	17,9	9	186	122
SKYROS	24,48	38,96	13,9	16	12,1	71	67
ARGOSTOLI	20,50	38,12	14,8	17,7	12,1	355	123
ARAXOS	21,42	38,15	13,4	17,3	9,9	156	151
TANAGRA	23,57	38,33	11,6	15,3	7,8	99	94
HIOS	26,13	38,35	13,6	16,6	10,9	282	116
PYRGOS	21,42	37,67					
TRIPOLI	22,40	37,52	7,8	12,4	4,1	131	88
TATOI	23,78	38,10	11,5	15	8,6	161	
HELLINIKO	23,73	37,90	14,4	17,4	11,9	79	147
ELEYSINA	23,55	38,07	13,3	16,5	10	128	
ZAKYNTHOS	20,88	37,75	14	17,1	11,2	198	108
SAMOS	26,92	37,68	14,3	17,1	11,2	135	
ARGOS	22,75	37,63					
KALAMATA	22,02	37,07	12,5	18	8,4	192	136
NAXOS	25,37	37,10					
METHONI	21,70	36,82					
MHLOS	24,43	36,73					
SPATA	23,95	37,95					
KOS	27,08	36,80	15,5	18,1	13,8	107	
KYTHIRA	22,98	36,15					
SANTORINI	25,41	36,41	15,3	17,4	12,1	48	163
SOUDA	24,12	35,55	13,7	16,7	11,3	77	119
RODOS	28,08	36,40	16,1	18,7	13,7	222	169
MYKONOS	25,35	37,43	15,2	18,4	13,7	60	
HRAKLEIO	25,18	35,33	15,2	18,1	12,8	52	132
IERAPETRA	25,73	35,02					
SITEIA	26,10	35,21	15,1	18,2	13,8	32	144
RETHYMNO	24,50	35,36					
TYMPAKI	24,76	35,06					
KASTELI	25,33	35,18	12,4	15,5	9,7	108	129
KARPATIOS	27,15	35,42					
PAROS	25,13	37,02	14,9	17,4	13,2	94	136
SYROS	24,95	37,42	15	17,2	13,4	58	160
IKARIA	26,35	37,68					

11,314,58,13617810,214,16,45611,314,57,89612510,713,7820210,5165,88616112,715,410,232137

**TABLE OF DEVIATIONS
FROM NORMAL VALUES**

STATION	TMEAN (deviation) (I)	PRECI (deviation %) (II)
SERRES	4.3	249
FLORINA		
THESSALONIKI	4	212
ALEXANDROUPOLI	3.5	151
KOZANI	3.1	101
KERKYRA	2.5	196
IOANNINA	2.7	116
LARISA	3.6	98
LIMNOS	2.9	111
AGHIALOS	3	114
MYTILINI	2.1	129
AGRINIO		
SKYROS	2.2	91
ARGOSTOLI	1.9	283
ARAXOS	1.9	119
HIOS	2.5	244
HELLINIKO	2.4	119
ZAKYNTHOS	1.2	117
SAMOS	2.2	83
KALAMATA	0.9	125
NAXOS		
METHONI		
SANTORINI	2.5	79
SOUDA	1.1	82
RODOS	2.7	153
HERAKLIO	1.4	67
SITIA	1.1	36

(I) deviation of mean temperature from normal values
 (II) deviation of monthly precipitation height from normal values %.

Climatic Bulletin

General Description

Precipitation amounts were higher than normal values almost everywhere and specifically over west parts, over Crete, over Evia and over northeast Aegean they were higher enough. The mean temperature varied above normal values everywhere.

Climatic Parameters :

- ❖ **Normal Values** : normal values for various parameters (temperature, precipitation, etc) are defined as mean values calculated for 30 years. These normal values are used as basis and represent the mean situation. They can be specified in 10 daily, monthly, seasonally and yearly level and are used for the trend comparison of 10 days, month, season or year as: rainy decameron, mild winter, cool August etc.

Measurement :

- ❖ **Precipitation**
1 mm = 1 litre/m²

Table Legend :

Tmean : Mean Temperature
 TN : Minimum Temperature
 TX : Maximum Temperature
 RR : Precipitation height(mm)
 INST : Sun Duration (hours)

UTC hours (Universal Time Coordinates) in Greece :

- ❖ Winter : UTC hour = local hour - 2
- ❖ Summer : UTC hour = local hour - 3

© Hellenic National Meteorological Service
 Reproduction is prohibited without written authorization
 14 El.Venizelou 16777
 Helliniko, Athens
 Greece