



Climatic Bulletin

November 2016

 **Max
temperature**

 **Min
temperature**

 **Mean
temperature**

 **Precipitation**

 **Sunshine
duration**

The main characteristic of November was a severe weather event which affected most parts of Greece between 26-29/11.

During the above period continuous rainfalls and locally strong thunderstorms caused extended floods.

Apart from that an extremely cold wave swept the country adding heavy snowfalls over mountainous mainland and over flat parts of west Macedonia at the end of month .



ΕΘΝΙΚΗ
ΜΕΤΕΩΡΟΛΟΓΙΚΗ
ΥΠΗΡΕΣΙΑ

HELLENIC NATIONAL METEOROLOGICAL SERVICE



Temperature

First 10-day period

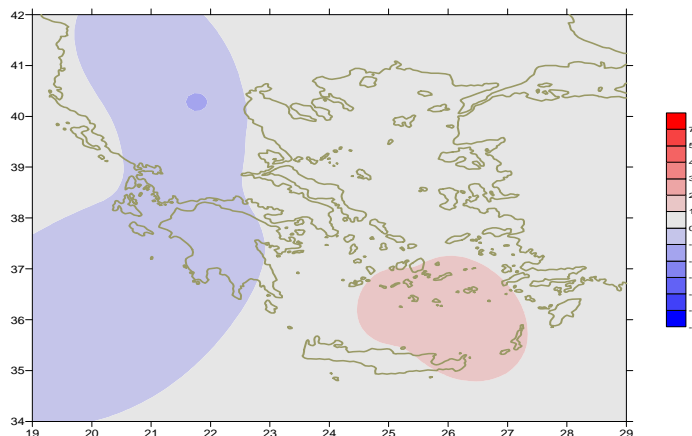
More specific (varied) :

Minimum:

from -5°C to 20°C over north mainland,
from 1°C to 20°C over central mainland,
from 2°C to 22°C over rest parts.

Maximum:

from 13°C to 24°C over north mainland,
from 16°C to 27°C over central mainland,
from 15°C to 29°C over rest parts.



Deviation of mean temperature from normal values

Second 10-day period

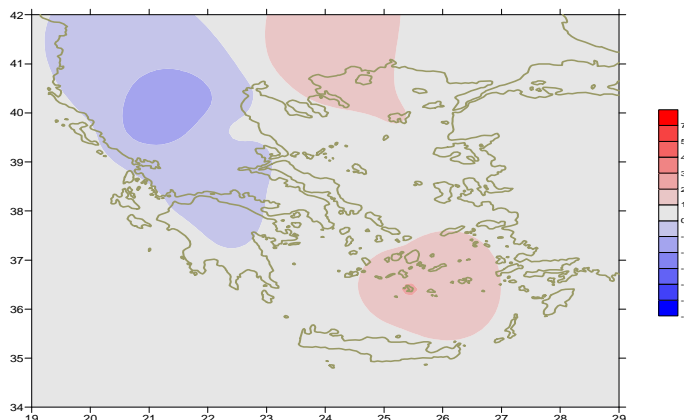
More specific (varied) :

Minimum:

from -3°C to 13°C over north mainland,
from 0°C to 14°C over central mainland,
from 0°C to 19°C over rest parts.

Maximum:

from 7°C to 20°C over north mainland,
from 10°C to 22°C over central mainland,
from 13°C to 23°C over rest parts.



Deviation of maximum temperature from normal values

Third 10-day period

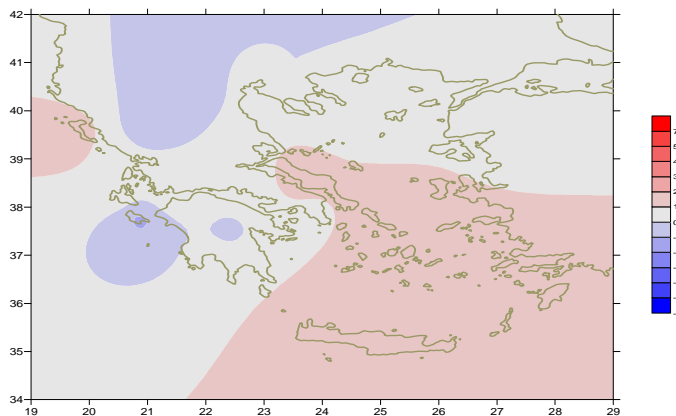
More specific (varied) :

Minimum:

from -4°C to 10°C over north mainland,
from 2°C to 15°C over central mainland,
from 3°C to 15°C over rest parts.

Maximum:

from 0°C to 15°C over north mainland,
from 7°C to 20°C over central mainland,
from 13°C to 22°C over rest parts.



Deviation of minimum temperature from normal values



Precipitation

First 10-day period

Remarkable precipitation over west, north parts and over east Aegean at the end.

More specific:

64mm in Andravida, 71mm in Argostoli, 17mm in Zakynthos,
20mm in Kalamata (4/11).
32mm in Kastoria, 24mm in Edessa, 72mm in Konitsa,
28mm in Kerkira, 110mm in Ioannina, 21mm in Argostoli,
27mm in Tripoli, 21mm in Zakynthos (9/11),
19mm in Alexandroupoli (10/11).

Second 10-day period

Remarkable precipitation mainly at 12/11.

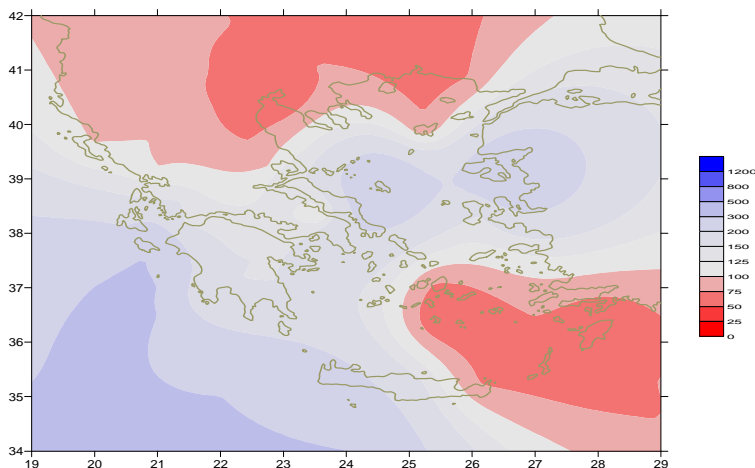
12mm in Kastoria, 23mm in Konitsa,
15mm in Kerkira, 25mm in Ioannina, 21mm in Preveza,
26mm in Araxos, 11mm in Methoni (12/11),
13mm in Argostoli (16/11).

Third 10-day period

Remarkable precipitation (strong rainfalls and thunderstorms)
between 26-30/11 but also heavy snowfalls over mountainous mainland
and flat parts of west Macedonia at the end.

More specific:

38mm in Argostoli, 35mm in Zakynthos (26/11),
23mm in Limnos, 38mm in Andravida, 68mm in Konitsa,
52mm in Kerkira, 69mm in Ioannina, 61mm in Argostoli,
26mm in Araxos, 62mm in Nat. Kolimviterio, 51mm in Tatoi,
51mm in Hellinikon, 87mm in Zakynthos, 57mm in Spata, 31mm in Kalamata,
20mm in Syros (27/11),
111mm in Mitilini, 38mm in Spata, 30mm in Nat. Kolimviterio (28/11),
103mm in Skiros, 86mm in Kos, 68mm in Mitilini,
27mm in Chios, 31mm in Karpathos, 43mm in Kasos (29/11),
81mm in Souda, 56mm in Iraklion, 37mm in Kastelorizo,
21mm in Kasteli (30/11).



*Deviation of monthly precipitation
height from normal values (%)*

TABLE OF MEAN VALUES

STATION	Longitude	Latitude	Tmean	TX	TN	RR	INST
SERRES	23,53	41,07	10,1	15,7	4,4	42	120
FLORINA	21,40	40,78					
KASTORIA	21,27	40,45	7,2	12,7	2	64	108
TRIKALA_IMATHIAS	22,55	40,60					
THESSALONIKI	22,97	40,52	11,5	15,6	7,5	26	134
CHRYSOUPOLI	24,62	40,92	11,3	15,5	6,8	18	145
ALEXANDROUPOLI	25,95	40,85	11,2	15,5	6,9	45	131
KOZANI	21,83	40,28	6,8	11,6	2,9	39	
KERKYRA	19,92	39,62	14,6	19,1	11,2	136	135
IOANNINA	20,82	39,70	9,4	14,4	4,1	145	78
PREVEZA	20,76	38,91	14,3	18,2	11,6	114	
TRIKALA_THESSALIAS	21,77	39,52					
LARISA	22,45	39,65	10,7	16,2	6	34	108
LIMNOS	25,23	39,92	12,8	16,4	9,4	43	135
ARTA	21,00	39,17					
AGHIALOS	22,78	39,21	12,2	16,7	8,8	28	118
MYTILINI	26,60	39,05	14,5	18	11,7	193	189
VELO	22,77	37,97					
AGRINIO	21,35	38,60					
LAMIA	22,43	38,87					
ANDRAVIDA	21,28	37,92	14,3	19,1	10,4	244	130
SKYROS	24,48	38,96	15,1	17,5	13,1	140	118
ARGOSTOLI	20,50	38,12	15,6	19,6	13	272	159
ARAXOS	21,42	38,15	14,6	18,7	11,1	166	160
TANAGRA	23,57	38,33	13,3	18	9,2	26	138
HIOS	26,13	38,35	14,5	17,9	11,7	98	167
PYRGOS	21,42	37,67					
TRIPOLI	22,40	37,52	9,7	15,4	4,7	109	150
TATOI	23,78	38,10	12,8	17,1	9,1	83	
HELLINIKO	23,73	37,90	15,8	19,1	12,6	100	163
ELEYSINA	23,55	38,07	14,7	19,1	11	26	
ZAKYNTHOS	20,88	37,75	15,2	19,6	11,2	268	146
SAMOS	26,92	37,68					
ARGOS	22,75	37,63					
KALAMATA	22,02	37,07					
NAXOS	25,37	37,10	17,1	19,7	15,1	28	168
METHONI	21,70	36,82					
MHLOS	24,43	36,73					
SPATA	23,95	37,95					
KOS	27,08	36,80	15,9	18,9	13	96	
KYTHIRA	22,98	36,15					
SANTORINI	25,41	36,41					
SOUDA	24,12	35,55	16,4	19,9	13,8	112	139
RODOS	28,08	36,40	17,2	20,6	14,8	24	201
MYKONOS	25,35	37,43	15,5	18	14,1	42	
HRAKLEIO	25,18	35,33	17,5	20,7	14,9	59	152
IERAPETRA	25,73	35,02					
SITEIA	26,10	35,21					
RETHYMNO	24,50	35,36					
TYMPAKI	24,76	35,06					
KASTELI	25,33	35,18	14,6	18,9	11,2	32	197
KARPATOS	27,15	35,42	18,3	20,9	16,8	32	
PAROS	25,13	37,02	16,5	18,9	14,6	22	169
SYROS	24,95	37,42					
IKARIA	26,35	37,68					

**TABLE OF DEVIATIONS
FROM NORMAL VALUES**

STATION	TMEAN (deviation) (I)	PRECI (deviation %) (II)
SERRES	1	78
FLORINA		
THESSALONIKI	0.6	45
ALEXANDROUPOLI	0.2	59
KOZANI	-1.2	65
KERKYRA	0.4	75
IOANNINA	-0.3	88
LARISA	-0.1	58
LIMNOS	0.5	57
AGHIALOS	0.1	44
MYTILINI	0	206
AGRINIO		
SKYROS	0.4	260
ARGOSTOLI	-0.1	168
ARAXOS	0	125
HIOS	0.7	118
HELLINIKO	0.4	197
ZAKYNTHOS	-0.6	168
SAMOS		
KALAMATA	-0.4	88
NAXOS	0.9	59
METHONI		
SANTORINI	1.8	15
SOUDA	0.8	154
RODOS	0.8	27
HERAKLIO	0.9	100
SITIA	3	31

(I) deviation of mean temperature from normal values
 (II) deviation of monthly precipitation height from normal values %.

Climatic Bulletin

General Description

Precipitation amounts varied higher enough than normals over central and south Ionian area, over central mainland (Attica included), over Peloponnese and locally over Aegean. The mean temperature was slightly lower than normal values only over west parts but it was higher over rest parts.

Climatic Parameters :

- ❖ **Normal Values** : normal values for various parameters (temperature, precipitation, etc) are defined as mean values calculated for 30 years. These normal values are used as basis and represent the mean situation. They can be specified in 10 daily, monthly, seasonally and yearly level and are used for the trend comparison of 10 days, month, season or year as: rainy decameron, mild winter, cool August etc.

Measurement :

- ❖ **Precipitation**
1 mm = 1 litre/m²

Table Legend :

Tmean : Mean Temperature
 TN : Minimum Temperature
 TX : Maximum Temperature
 RR : Precipitation height(mm)
 INST : Sun Duration (hours)

UTC hours (Universal Time Coordinates) in Greece :

- ❖ Winter : UTC hour = local hour - 2
- ❖ Summer : UTC hour = local hour - 3

© Hellenic National Meteorological Service
 Reproduction is prohibited without written authorization
 14 El.Venizelou 16777
 Helliniko, Athens
 Greece