




Climatic Bulletin

July 2016

 **Max
temperature**

 **Min
temperature**

 **Mean
temperature**

 **Precipitation**

 **Sunshine
duration**

This July gave the image of a typical summer month in Greece.

Specifically its main characteristics were the lack of precipitation over islands, the persistence of blowing of strong north-northeast winds over eastern parts and the increased number of thunderstorms over northwest mainland at the beginning.



ΕΘΝΙΚΗ
ΜΕΤΕΩΡΟΛΟΓΙΚΗ
ΥΠΗΡΕΣΙΑ

HELLENIC NATIONAL METEOROLOGICAL SERVICE



Temperature

First Decameron

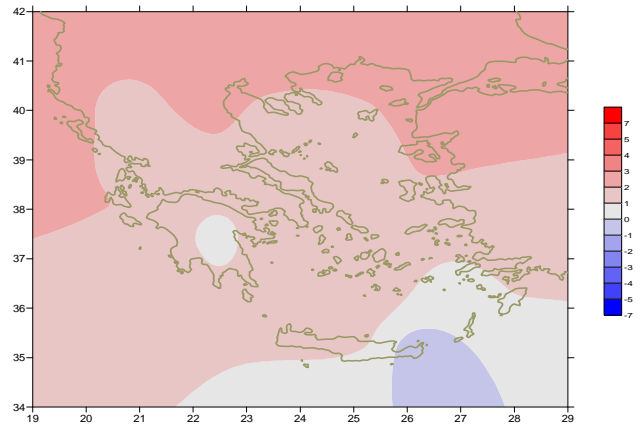
More specific (varied) :

Minimum:

from 9°C to 23°C over north mainland,
from 14°C to 26°C over central mainland,
from 20°C to 26°C over rest parts.

Maximum:

from 28°C to 36°C over north mainland,
from 30°C to 38°C over central mainland,
from 28°C to 36°C over rest parts.



Deviation of mean temperature from normal values

Second Decameron

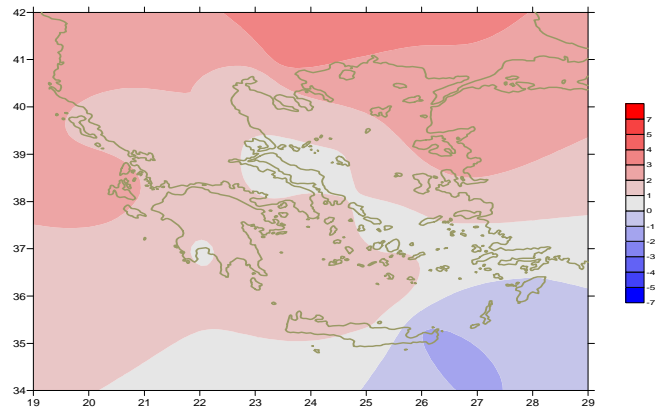
More specific (varied) :

Minimum:

from 11°C to 25°C over north mainland,
from 14°C to 25°C over central mainland,
from 19°C to 26°C over rest parts.

Maximum:

from 29°C to 39°C over north mainland,
from 28°C to 40°C over central mainland,
from 26°C to 36°C over rest parts.



Deviation of maximum temperature from normal values

Third Decameron

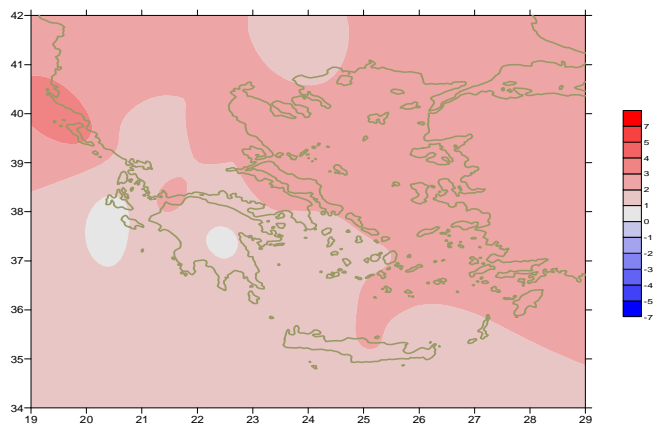
More specific (varied) :

Minimum:

from 10°C to 24°C over north mainland,
from 15°C to 25°C over central mainland,
from 18°C to 26°C over rest parts.

Maximum:

from 28°C to 38°C over north mainland,
from 29°C to 38°C over central mainland,
from 26°C to 38°C over rest parts.



Deviation of minimum temperature from normal values



P r e c i p i t a t i o n

First Decameron

Local rainfalls , thunderstorms over mainland.

More specific:

*6mm in Kastoria, 9mm in Konitsa, 8mm in Tripoli (1/7),
2mm in Serres, 2mm in Alexandroupoli (4/7),
10mm in Aghialos, 3mm in Edessa, 5mm in Naxos (7/7).*

Second Decameron

A few local precipitation in the middle of the period.

More specific:

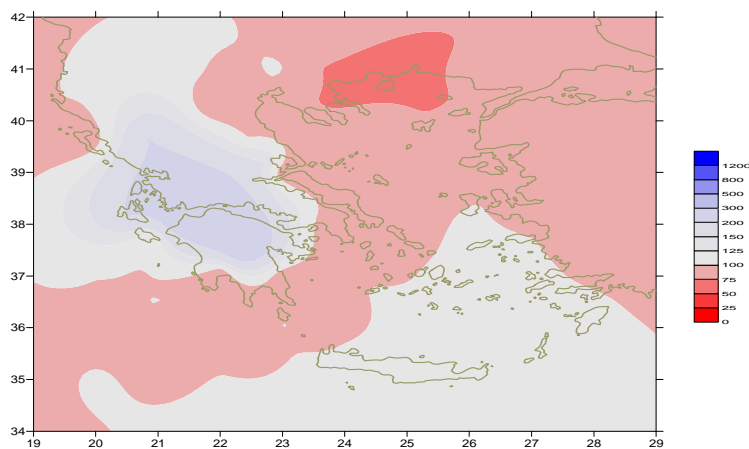
6mm in Konitsa, 7mm in Ioannina, 1mm in Preveza at 16/7.

Third Decameron

A few local precipitation over north mainland.

More specific:

*8mm in Kastoria at 25/7,
23mm in Ioannina at 26/7.*



Deviation of monthly precipitation height from normal values (%)

TABLE OF MEAN VALUES

STATION	Longitude	Latitude	Tmean	TX	TN	RR	INST
SERRES	23,53	41,07	28,4	35,6	19,9	7	317
FLORINA	21,40	40,78					
KASTORIA	21,27	40,45	25,2	31,4	15,7	16	339
TRIKALA_IMATHIAS	22,55	40,60					
THESSALONIKI	22,97	40,52	28,6	32,6	21,4	0	350
CHRYSOUPOLI	24,62	40,92	27,1	31	20,7	0	360
ALEXANDROUPOLI	25,95	40,85	28,4	32,9	19,9	2	384
KOZANI	21,83	40,28	26,3	31,3	17,5	15	
KERKYRA	19,92	39,62	28,7	32,8	21,7	0	388
IOANNINA	20,82	39,70	26	32,7	16,4	36	301
PREVEZA	20,76	38,91	27	31,2	21,3	1	
TRIKALA_THESSALIAS	21,77	39,52					
LARISA	22,45	39,65	29,2	34,3	20	2	327
LIMNOS	25,23	39,92	27,3	31,1	22	0	394
ARTA	21,00	39,17					
AGHIALOS	22,78	39,21	28,4	32	20,5	10	369
MYTILINI	26,60	39,05	28,6	33,1	23,6	0	427
VELO	22,77	37,97					
AGRINIO	21,35	38,60					
LAMIA	22,43	38,87					
ANDRAVIDA	21,28	37,92	27	30,9	20,1	0	398
SKYROS	24,48	38,96	26,5	28,5	23,5	0	325
ARGOSTOLI	20,50	38,12	27,5	31	21,3	0	401
ARAXOS	21,42	38,15	28,5	32,8	20,9	0	378
TANAGRA	23,57	38,33	28,8	32,6	20,6	0	378
HIOS	26,13	38,35	28,3	31,4	23,7	0	360
PYRGOS	21,42	37,67					
TRIPOLI	22,40	37,52	25,1	31,4	15	40	340
TATOI	23,78	38,10	28,1	31,8	21,5	0	
HELLINIKO	23,73	37,90	29,8	33	24,6	0	349
ELEYSINA	23,55	38,07	30,4	34,3	23,4	0	
ZAKYNTHOS	20,88	37,75	28,6	32,5	21,5	0	422
SAMOS	26,92	37,68	29,6	33,6	25	0	
ARGOS	22,75	37,63					
KALAMATA	22,02	37,07	27,6	32,1	19,4	0	365
NAXOS	25,37	37,10	25,7	27,2	23,6	0	405
METHONI	21,70	36,82					
MHLOS	24,43	36,73					
SPATA	23,95	37,95					
KOS	27,08	36,80	27,1	30,9	23,7	0	
KYTHIRA	22,98	36,15					
SANTORINI	25,41	36,41	27,3	30,4	24	0	354
SOUDA	24,12	35,55	27,6	31,6	22,3	0	396
RODOS	28,08	36,40	28	30,5	24,6	0	397
MYKONOS	25,35	37,43	26,1	28,4	23,2	0	
HRAKLEIO	25,18	35,33	27,3	29,5	23,8	0	406
IERAPETRA	25,73	35,02					
SITEIA	26,10	35,21	25,4	27,4	23,5	0	304
RETHYMNO	24,50	35,36					
TYMPAKI	24,76	35,06					
KASTELI	25,33	35,18	25,2	29	21,2	0	357
KARPATIOS	27,15	35,42	26,1	29	23,9	0	
PAROS	25,13	37,02	26,9	30	23,1	0	356
SYROS	24,95	37,42	27,2	29,9	24,2	0	398
IKARIA	26,35	37,68					

**TABLE OF DEVIATIONS
FROM NORMAL VALUES**

STATION	TMEAN (deviation)	PRECI (deviation %)
	(I)	(II)
SERRES	2.3	22
FLORINA		
THESSALONIKI	2.1	0
ALEXANDROUPOLI	2.8	11
KOZANI	2.3	39
KERKYRA	2.3	0
IOANNINA	1.2	126
LARISA	2.1	10
LIMNOS	1.8	0
AGHIALOS	1.7	56
MYTILINI	2.2	0
AGRINIO		
SKYROS	1.2	0
ARGOSTOLI	2	0
ARAXOS	1.9	0
HIOS	1.9	0
HELLINIKO	2	0.2
ZAKYNTHOS	1.9	0
SAMOS	1.2	0
KALAMATA	1.1	0.3
NAXOS	1	0
METHONI		
SANTORINI	1.9	0
SOUDA	1.2	0
RODOS	1.1	0
HERAKLIO	1.2	0
SITIA	-0.6	0

(I) deviation of mean temperature from normal values
 (II) deviation of monthly precipitation height from normal values %.

Climatic Bulletin

General Description

Precipitation amounts varied close to normals over most parts with exception of northwest mainland where they were higher. The mean temperature was higher enough than normal values almost everywhere.

Climatic Parameters :

- ❖ **Normal Values** : normal values for various parameters (temperature, precipitation, etc) are defined as mean values calculated for 30 years. These normal values are used as basis and represent the mean situation. They can be specified in 10 daily, monthly, seasonally and yearly level and are used for the trend comparison of 10 days, month, season or year as: rainy decameron, mild winter, cool August etc.

Measurement :

- ❖ **Precipitation**
1 mm = 1 litre/m²

Table Legend :

Tmean : Mean Temperature
 TN : Minimum Temperature
 TX : Maximum Temperature
 RR : Precipitation height(mm)
 INST : Sun Duration (hours)

UTC hours (Universal Time Coordinates) in Greece :

- ❖ Winter : UTC hour = local hour - 2
- ❖ Summer : UTC hour = local hour - 3

© Hellenic National Meteorological Service
 Reproduction is prohibited without written authorization
 14 El.Venizelou 16777
 Helliniko, Athens
 Greece