



# Climatic Bulletin

March 2016

- Max temperature
- Min temperature
- Mean temperature
- Precipitation
- Sunshine duration

March had significant variations of temperature values. Good weather alternated with periods of heavy rainfalls, thunderstorms and strong local snowfalls mainly over central and north mountains.

A remarkable episode of dust transfer from Africa on the 23th of month caused problems over southern Greek islands , mainly over Crete where the schools remained closed.



# Temperature

### First Decameron

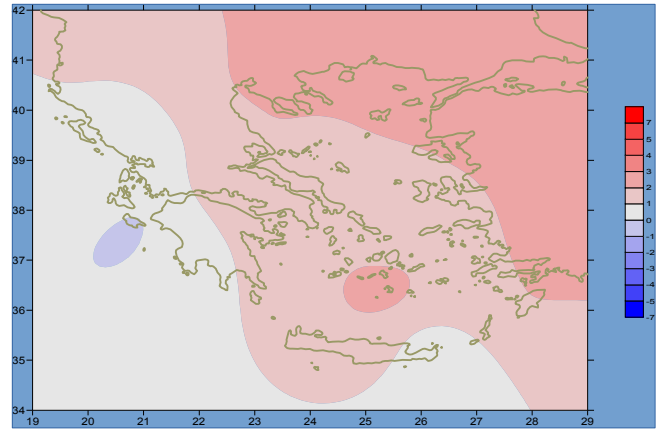
More specific (varied) :

**Minimum:**

from  $-2^{\circ}\text{C}$  to  $13^{\circ}\text{C}$  over north mainland,  
 from  $1^{\circ}\text{C}$  to  $15^{\circ}\text{C}$  over central mainland,  
 from  $5^{\circ}\text{C}$  to  $17^{\circ}\text{C}$  over rest parts.

**Maximum:**

from  $9^{\circ}\text{C}$  to  $22^{\circ}\text{C}$  over north mainland,  
 from  $8^{\circ}\text{C}$  to  $22^{\circ}\text{C}$  over central mainland,  
 from  $12^{\circ}\text{C}$  to  $23^{\circ}\text{C}$  over rest parts.



*Deviation of mean temperature from normal values*

### Second Decameron

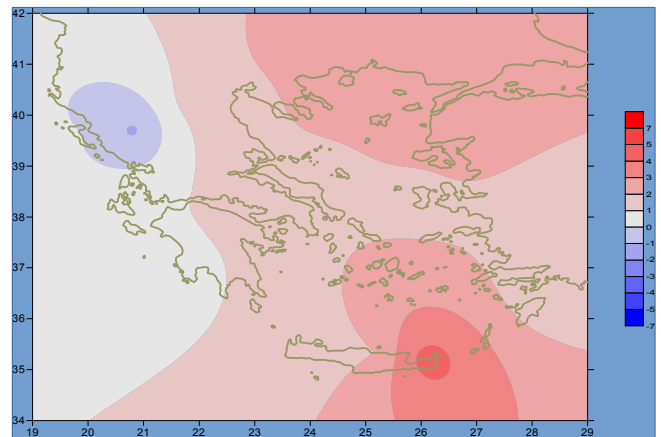
More specific (varied) :

**Minimum:**

from  $-2^{\circ}\text{C}$  to  $9^{\circ}\text{C}$  over north mainland,  
 from  $2^{\circ}\text{C}$  to  $12^{\circ}\text{C}$  over central mainland,  
 from  $4^{\circ}\text{C}$  to  $15^{\circ}\text{C}$  over rest parts.

**Maximum:**

from  $6^{\circ}\text{C}$  to  $20^{\circ}\text{C}$  over north mainland,  
 from  $8^{\circ}\text{C}$  to  $20^{\circ}\text{C}$  over central mainland,  
 from  $11^{\circ}\text{C}$  to  $22^{\circ}\text{C}$  over rest parts.



*Deviation of maximum temperature from normal values*

### Third Decameron

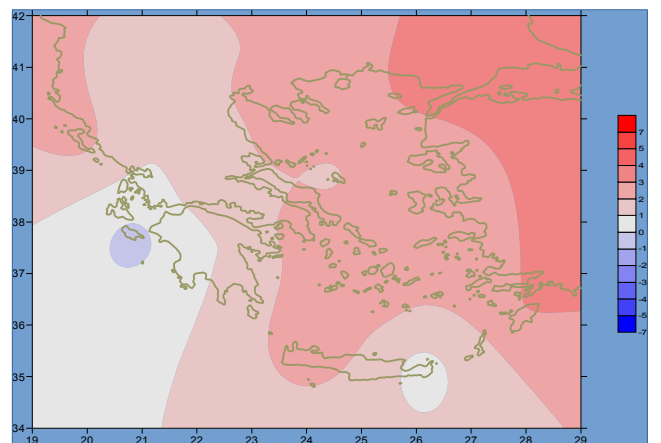
More specific (varied) :

**Minimum:**

from  $-5^{\circ}\text{C}$  to  $10^{\circ}\text{C}$  over north mainland,  
 from  $-2^{\circ}\text{C}$  to  $13^{\circ}\text{C}$  over central mainland,  
 from  $2^{\circ}\text{C}$  to  $16^{\circ}\text{C}$  over rest parts.

**Maximum:**

from  $9^{\circ}\text{C}$  to  $23^{\circ}\text{C}$  over north mainland,  
 from  $12^{\circ}\text{C}$  to  $25^{\circ}\text{C}$  over central mainland,  
 from  $11^{\circ}\text{C}$  to  $26^{\circ}\text{C}$  over rest parts.



*Deviation of minimum temperature from normal values*



## Precipitation

### First Decameron

Remarkable precipitation over most parts.

More specific:

17mm in Konitsa (1/3),  
 20mm in Ioannina, 30mm in Tripoli at 4/3,  
 23mm in Mitilini at 5/3,  
 27mm in kerkira, 35mm in Preveza at 7/3,  
 18mm in Alexandroupoli at 8/3,  
 28mm in Thessaloniki at 9/3,  
 19mm in Serres, 22mm in Mitilini, 11mm in Tatoi at 10/3.

### Second Decameron

Remarkable and strong precipitation between 13-14/3.

More specific:

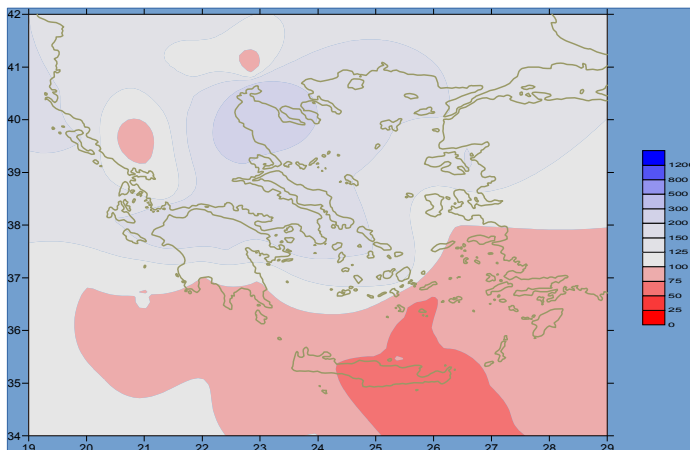
38mm in Edessa, 36mm in Larisa, 93mm in Souda at 13/3,  
 27mm in Aghialos, 28mm in Skyros, 39mm in Tanagra, 31mm in Karistos,  
 35mm in Tatoi, 66mm in Hellinikon, 38mm in Samos, 43mm in Naxos,  
 42mm in Spata, 42mm in Mikonos, 58mm in Paros, 58mm in Siros,  
 17mm in Nat.Kolimvitiro at 14/3,  
 29mm in Andravida, 56mm in Argostoli, 28mm in Araxos at 18/3,  
 29mm in Kos, 22mm in Kithira at 19/3.

### Third Decameron

Local precipitation in the middle of the period.

More specific:

21mm in Konitsa, 18mm in Andravida, 80mm in Araxos,  
 18mm in Kalamata at 24/3,  
 19mm in Chrissoupoli, 17mm in Limnos,  
 11mm in Tripoli at 25/3.



**Deviation of monthly precipitation  
 height from normal values (%)**

TABLE OF MEAN VALUES

| STATION            | Longitude | Latitude | Tmean | TX   | TN   | RR  | INST |
|--------------------|-----------|----------|-------|------|------|-----|------|
| SERRES             | 23,53     | 41,07    | 11,8  | 17,2 | 6,1  | 48  | 140  |
| FLORINA            | 21,40     | 40,78    |       |      |      |     |      |
| KASTORIA           | 21,27     | 40,45    | 8,3   | 13,7 | 2,3  | 72  | 140  |
| TRIKALA_IMATHIAS   | 22,55     | 40,60    |       |      |      |     |      |
| THESSALONIKI       | 22,97     | 40,52    | 11,8  | 15,8 | 6,8  | 106 | 174  |
| CHRYSOUPOLI        | 24,62     | 40,92    | 11,4  | 14,7 | 7,6  | 81  | 184  |
| ALEXANDROUPOLI     | 25,95     | 40,85    | 11,2  | 14,9 | 6,9  | 56  | 171  |
| KOZANI             | 21,83     | 40,28    | 8,6   | 13   | 2,9  | 48  |      |
| KERKYRA            | 19,92     | 39,62    | 13    | 16,2 | 9,2  | 141 | 131  |
| IOANNINA           | 20,82     | 39,70    | 9,2   | 13,6 | 4,4  | 63  | 120  |
| PREVEZA            | 20,76     | 38,91    | 13,3  | 16,6 | 9,1  | 167 |      |
| TRIKALA_THESSALIAS | 21,77     | 39,52    |       |      |      |     |      |
| LARISA             | 22,45     | 39,65    | 10,9  | 16,5 | 5    | 84  | 153  |
| LIMNOS             | 25,23     | 39,92    | 12,2  | 15,4 | 9    | 53  | 183  |
| ARTA               | 21,00     | 39,17    |       |      |      |     |      |
| AGHIALOS           | 22,78     | 39,21    | 11,9  | 16,3 | 6,7  | 108 | 174  |
| MYTILINI           | 26,60     | 39,05    | 13,9  | 17   | 10,9 | 89  | 206  |
| VELO               | 22,77     | 37,97    |       |      |      |     |      |
| AGRINIO            | 21,35     | 38,60    |       |      |      |     |      |
| LAMIA              | 22,43     | 38,87    |       |      |      |     |      |
| ANDRAVIDA          | 21,28     | 37,92    | 12,6  | 17,1 | 8,2  | 126 | 169  |
| SKYROS             | 24,48     | 38,96    | 13,1  | 15,8 | 10,8 | 51  | 165  |
| ARGOSTOLI          | 20,50     | 38,12    | 13,3  | 16,9 | 10   | 125 | 196  |
| ARAXOS             | 21,42     | 38,15    | 13    | 17   | 8,4  | 109 | 180  |
| TANAGRA            | 23,57     | 38,33    | 12,3  | 16,6 | 6,6  | 78  | 170  |
| HIOS               | 26,13     | 38,35    | 13,3  | 16,6 | 9,9  | 61  | 196  |
| PYRGOS             | 21,42     | 37,67    |       |      |      |     |      |
| TRIPOLI            | 22,40     | 37,52    | 9     | 14,1 | 3,6  | 96  | 178  |
| TATOI              | 23,78     | 38,10    | 11,5  | 15,9 | 6,9  | 66  |      |
| HELLINIKO          | 23,73     | 37,90    | 14,1  | 17,7 | 10,8 | 81  | 183  |
| ELEYSINA           | 23,55     | 38,07    | 13,2  | 17,4 | 8,5  | 39  |      |
| ZAKYNTHOS          | 20,88     | 37,75    | 12,8  | 16,7 | 8,8  | 123 | 189  |
| SAMOS              | 26,92     | 37,68    |       |      |      |     |      |
| ARGOS              | 22,75     | 37,63    |       |      |      |     |      |
| KALAMATA           | 22,02     | 37,07    | 12,9  | 18   | 7,6  | 72  | 190  |
| NAXOS              | 25,37     | 37,10    | 15,1  | 17,9 | 12,4 | 61  | 243  |
| METHONI            | 21,70     | 36,82    |       |      |      |     |      |
| MHLOS              | 24,43     | 36,73    |       |      |      |     |      |
| SPATA              | 23,95     | 37,95    | 13    | 16,4 | 7,8  | 69  |      |
| KOS                | 27,08     | 36,80    | 14,1  | 16,9 | 11,6 | 69  |      |
| KYTHIRA            | 22,98     | 36,15    |       |      |      |     |      |
| SANTORINI          | 25,41     | 36,41    | 15,1  | 17,7 | 12,4 | 45  | 215  |
| SOUDA              | 24,12     | 35,55    | 14,3  | 18,2 | 11,2 | 43  | 234  |
| RODOS              | 28,08     | 36,40    | 15,7  | 18,2 | 13,1 | 62  | 259  |
| MYKONOS            | 25,35     | 37,43    | 13,8  | 16,4 | 12,3 | 59  |      |
| HRAKLEIO           | 25,18     | 35,33    | 15,2  | 18,8 | 11,5 | 23  | 215  |
| IERAPETRA          | 25,73     | 35,02    |       |      |      |     |      |
| SITEIA             | 26,10     | 35,21    | 14,1  | 21,6 | 10,9 | 24  | 210  |
| RETHYMNO           | 24,50     | 35,36    |       |      |      |     |      |
| TYMPAKI            | 24,76     | 35,06    |       |      |      |     |      |
| KASTELI            | 25,33     | 35,18    | 12,7  | 17,3 | 8,1  | 53  | 220  |
| KARPATOS           | 27,15     | 35,42    | 15,8  | 18,2 | 14,1 | 14  |      |
| PAROS              | 25,13     | 37,02    | 14,3  | 16,7 | 11,7 | 88  | 234  |
| SYROS              | 24,95     | 37,42    | 14    | 17,5 | 11   | 72  | 240  |
| IKARIA             | 26,35     | 37,68    |       |      |      |     |      |

**TABLE OF DEVIATIONS  
FROM NORMAL VALUES**

| STATION        | TMEAN<br>( deviation )<br>(I) | PRECI<br>( deviation % )<br>(II) |
|----------------|-------------------------------|----------------------------------|
| SERRES         | 2.1                           | 145                              |
| FLORINA        |                               |                                  |
| THESSALONIKI   | 2.2                           | 232                              |
| ALEXANDROUPOLI | 2.7                           | 107                              |
| KOZANI         | 1.6                           | 114                              |
| KERKYRA        | 0.9                           | 143                              |
| IOANNINA       | 0.3                           | 64                               |
| LARISA         | 1.4                           | 231                              |
| LIMNOS         | 2.3                           | 103                              |
| AGHIALOS       | 1.9                           | 207                              |
| MYTILINI       | 2.1                           | 119                              |
| AGRINIO        |                               |                                  |
| SKYROS         | 1.4                           | 99                               |
| ARGOSTOLI      | 0.2                           | 151                              |
| ARAXOS         | 0.7                           | 183                              |
| HIOS           | 1.5                           | 83                               |
| HELLINIKO      | 1.7                           | 183                              |
| ZAKYNTHOS      | -0.1                          | 137                              |
| SAMOS          |                               |                                  |
| KALAMATA       | 0.5                           | 100                              |
| NAXOS          | 1.8                           | 123                              |
| METHONI        |                               |                                  |
| SANTORINI      | 2.4                           | 75                               |
| SOUDA          | 1.7                           | 53                               |
| RODOS          | 2.1                           | 82                               |
| HERAKLIO       | 1.6                           | 40                               |
| SITIA          | 0.3                           | 43                               |

(I) deviation of mean temperature from normal values

(II) deviation of monthly precipitation height from normal values %.

# Climatic Bulletin

## General Description

Precipitation amounts varied higher than normals over most parts, with the exception of Kreta island and south Aegean area. The mean temperature was higher than normal values almost everywhere.

### Measurement :

### Climatic Parameters :

**Normal Values :** normal values for various parameters (temperature, precipitation, etc) are defined as mean values calculated for 30 years. These normal values are used as basis and represent the mean situation. They can be specified in 10 daily, monthly, seasonally and yearly level and are used for the trend comparison of 10 days, month, season or year as: rainy decameron, mild winter, cool August etc.

### Precipitation

1 mm = 1 litre/m<sup>2</sup>

### Table Legend :

Tmean : Mean Temperature  
 TN : Minimum Temperature  
 TX : Maximum Temperature  
 RR : Precipitation height(mm)  
 INST : Sun Duration (hours)

### UTC hours (Universal Time Coordinates) in Greece :

Winter : UTC hour = local hour - 2  
 Summer : UTC hour = local hour - 3

© Hellenic National Meteorological Service  
 Reproduction is prohibited without written authorization  
 14 El.Venizelou 16777  
 Helliniko, Athens  
 Greece



Climatological Division  
 M. Michelaraki  
 meteorologist

Website : [www.hnms.gr](http://www.hnms.gr)

