




Climatic Bulletin

January 2014

 **Max
temperature**

 **Min
temperature**

 **Mean
temperature**

 **Precipitation**

 **Sunshine
duration**

January was warm enough everywhere.
Meanwhile local floods recorded because of strong
rainfalls and thunderstorms.
In parallel, hail and gale force winds caused damages.



ΕΘΝΙΚΗ
ΜΕΤΕΩΡΟΛΟΓΙΚΗ
ΥΠΗΡΕΣΙΑ
HELLENIC NATIONAL METEOROLOGICAL SERVICE



Temperature

First Decameron

Minimum: relatively high values.

More specific (from the lowest) :

-1.5°C in Konitsa, -2.6°C in Tripoli at 9/1

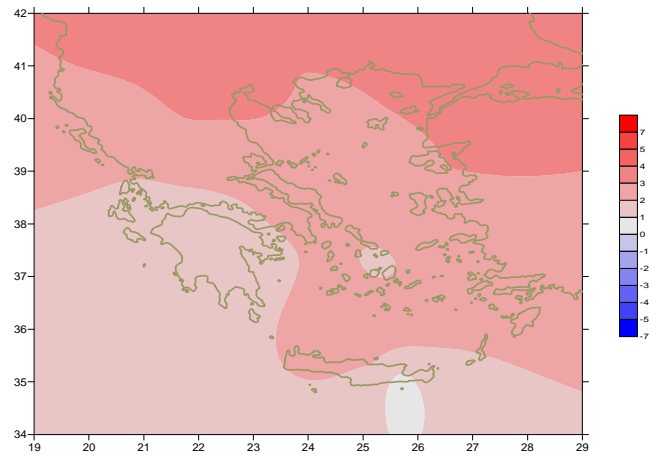
-4.1°C in Ioannina at 10/1.

Maximum:

More specific(from the highest):

19.6°C in Methoni, 18°C in Karpathos at 7/1,

19.2°C in Kerkyra at 8/1.



Deviation of mean temperature from normal values

Second Decameron

Minimum: relatively high values.

More specific (from the lowest) :

-0.7°C in Serres at 12/1,

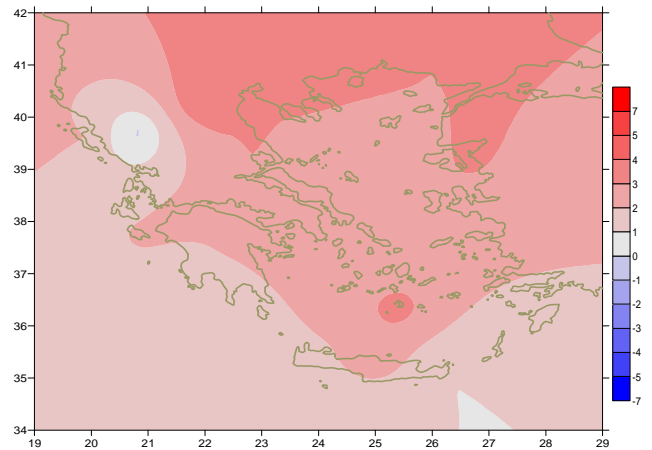
-3.6°C in Florina, -0.3°C in Tripoli at 17/1.

Maximum:

More specific(from the highest):

20.8°C in Iraklion, 20°C in Santorini,

20.4°C in Argos, 21.2°C in Sauda at 20/1.



Deviation of maximum temperature from normal values

Third Decameron

Minimum: relatively high values.

More specific (from the lowest) :

-5.9°C in Kozani, -4.1°C in Kastoria at 27/1,

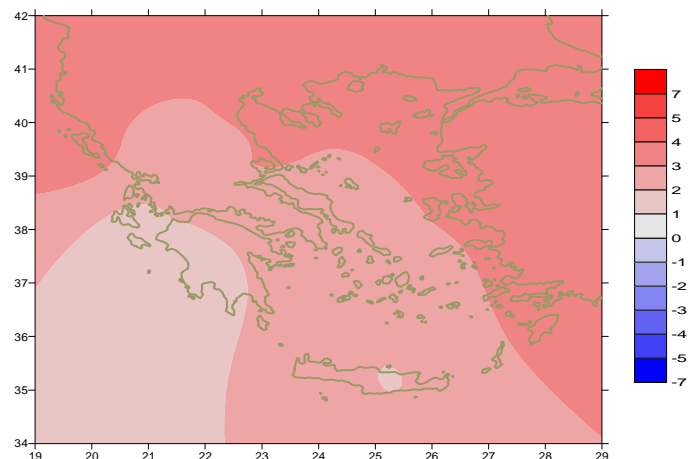
-2.4°C in Edessa at 28/1.

Maximum:

More specific(from the highest):

21.2°C in Iraklion, 20°C in Sitia and

18.8°C in Ikaria at 25/1.



Deviation of minimum temperature from normal values



Precipitation

First Decameron

Significant rainfalls .

More specific:

*17mm in Argostoli, 18mm in Tripoli (1/1),
31mm in Samos, 34mm in Kos, 62mm in Ikaría at 2/1,
49 in Kerkyra, 28mm in Adravida, 27mm in Kithira at 6/1.*

Second Decameron

Local rainfalls and thunderstorms over most parts.

More specific:

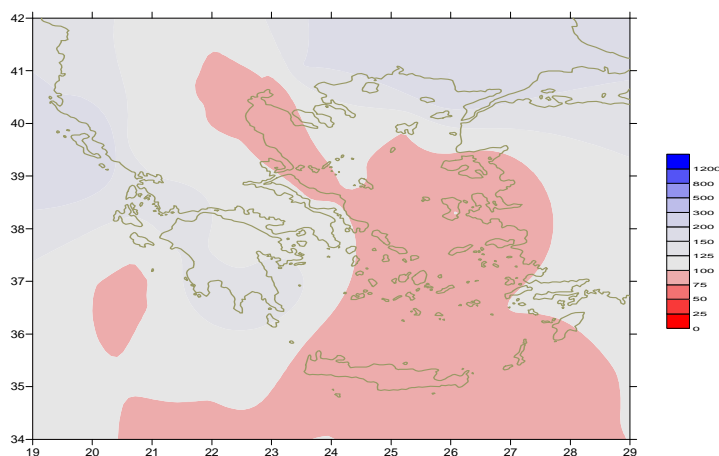
*76mm in Kerkyra at 15/1,
33 in Alexandroupoli, 36mm in Elefsina,
56 in Rodos, 45mm in Ikaría at 16/1.*

Third Decameron

Locally strong rainfalls and thunderstorms.

More specific:

*30mm in Konitsa, 27mm in Chrissoupoli,
33mm in Arta, 56mm in Tripoli at 25/1,
31mm in Nat..Kolimviritio, 25mm in Spata at 26/1,
40mm in Milos at 28/1, 36mm in Mitilini, 46mm in Tatoi at 29/1.*



*Deviation of monthly precipitation
height from normal values (%)*

TABLE OF MEAN VALUES

STATION	Longitude	Latitude	Tmean	TX	TN	RR	INST
SERRES	23,53	41,07	6,8	11,4	3	44	94
FLORINA	21,40	40,78					
KASTORIA	21,27	40,45	4,9	10	0,3	36	97
TRIKALA_IMATHIAS	22,55	40,60					
THESSALONIKI	22,97	40,52	8,4	12,1	5,1	25	107
CHRYSOUPOLI	24,62	40,92	8,7	12	5,5	74	100
ALEXANDROUPOLI	25,95	40,85	8	11,4	4,6	108	93
KOZANI	21,83	40,28	5,3	9,6	1,6	17	
KERKYRA	19,92	39,62	12,3	15,9	9,1	235	86
IOANNINA	20,82	39,70	6,9	10,2	2,8	97	59
PREVEZA	20,76	38,91	11,9	14,8	10	153	
TRIKALA_THESSALIAS	21,77	39,52					
LARISA	22,45	39,65	7,8	12,6	3,2	19	90
LIMNOS	25,23	39,92	10,4	13,5	7,8	59	110
ARTA	21,00	39,17					
AGHIALOS	22,78	39,21	9,5	13,8	5,7	26	123
MYTILINI	26,60	39,05	12,3	15,1	9,9	84	80
VELO	22,77	37,97					
AGRINIO	21,35	38,60					
LAMIA	22,43	38,87					
ANDRAVIDA	21,28	37,92	11,7	16	8,5	156	118
SKYROS	24,48	38,96	12,1	14,4	9,9	75	101
ARGOSTOLI	20,50	38,12					
ARAXOS	21,42	38,15	11,8	15,9	8,2	132	135
TANAGRA	23,57	38,33	9,8	14,3	6	43	128
HIOS	26,13	38,35	12,3	15,3	9,2	110	122
PYRGOS	21,42	37,67					
TRIPOLI	22,40	37,52	7,2	11,6	2,8	94	71
TATOI	23,78	38,10	10	14,3	6,3	112	
HELLINIKO	23,73	37,90					
ELEYSINA	23,55	38,07	11,8	15,9	7,8	90	
ZAKYNTHOS	20,88	37,75	12,6	16,5	9,1	97	105
SAMOS	26,92	37,68					
ARGOS	22,75	37,63					
KALAMATA	22,02	37,07	11,5	16,7	7,2	169	132
NAXOS	25,37	37,10	13,8	16,3	11,4	61	96
METHONI	21,70	36,82					
MHLOS	24,43	36,73					
SPATA	23,95	37,95					
KOS	27,08	36,80	13,1	15,5	11	34	
KYTHIRA	22,98	36,15					
SANTORINI	25,41	36,41	14,2	16,7	11,7	44	148
SOUDA	24,12	35,55	13,2	16,3	10,3	46	125
RODOS	28,08	36,40	14,2	16,6	12,1	116	121
MYKONOS	25,35	37,43	12,8	14,9	11,3	31	
HERAKLEIO	25,18	35,33	14	17,6	10,9	24	127
IERAPETRA	25,73	35,02					
SITEIA	26,10	35,21	13,9	16,5	11,6	32	
RETHYMNO	24,50	35,36					
TYMPAKI	24,76	35,06					
KASTELI	25,33	35,18	11,4	15,1	7,9	74	128
KARPATOS	27,15	35,42	15,3	17	13,5	38	
PAROS	25,13	37,02					
SYROS	24,95	37,42	13,5	15,6	11,2	66	149
IKARIA	26,35	37,68	12,4	14,2	11,4	209	

TABLE OF DEVIATIONS
FROM NORMAL VALUES

STATION	TMEAN (deviation) (I)	PRECI (deviation %) (II)
SERRES	3	125
FLORINA		
THESSALONIKI	3.4	67
ALEXANDROUPOLI	3.2	180
KOZANI	3.3	43
KERKYRA	2.7	178
IOANNINA	2.3	75
LARISA	2.7	63
LIMNOS	2.9	82
AGHIALOS		54
MYTILINI	3	65
AGRINIO		
SKYROS	2.2	96
ARGOSTOLI		
ARAXOS	1.7	137
HIOS	2.7	95
HELLINIKO		
ZAKYNTHOS	1.3	65
SAMOS		
KALAMATA	1.3	150
NAXOS	1.8	86
METHONI		
SANTORINI	2.9	69
SOUDA	2.4	33
RODOS	2.5	78
HERAKLIO	2	26
SITIA	1.6	35

(I) deviation of mean temperature from normal values
(II) deviation of monthly precipitation height from normal values %.

Climatic Bulletin

General Description

Precipitation amounts were higher than normal values everywhere with exception of Thessaly, Central-South Aegean and Crete where they were lower.
The mean temperature varied higher than normal values over every part of Greece.

Climatic Parameters :

- ❖ **Normal Values** : normal values for various parameters (temperature, precipitation, etc) are defined as mean values calculated for 30 years. These normal values are used as basis and represent the mean situation. They can be specified in 10 daily, monthly, seasonally and yearly level and are used for the trend comparison of 10 days, month, season or year as: rainy decameron, mild winter, cool August etc.

Measurement :

- ❖ **Precipitation**
1 mm = 1 litre/m²

Table Legend :

Tmean : Mean Temperature
TN : Minimum Temperature
TX : Maximum Temperature
RR : Precipitation height(mm)
INST : Sun Duration (hours)

UTC hours (Universal Time Coordinates) in Greece :

- ❖ Winter : UTC hour = local hour - 2
- ❖ Summer : UTC hour = local hour - 3

© Hellenic National Meteorological Service
Reproduction is prohibited without written authorization
14 El.Venizelou 16777
Helliniko, Athens
Greece